



Delivering Your Dreams...

LIGHT DARK
▲▲ SERIES

600x
600mm

New Addition

12+ SURFACE

100%
WATER PROOF

LIGHT DARK

▲▲ SERIES

Dance between light and shadow with our breathtaking new tile collection that injects spaces with mood and personality. Discover dimension and beauty as the dramatic contrasts of light and dark mesmerizingly interplay.

600x**600**mm | **New Addition**

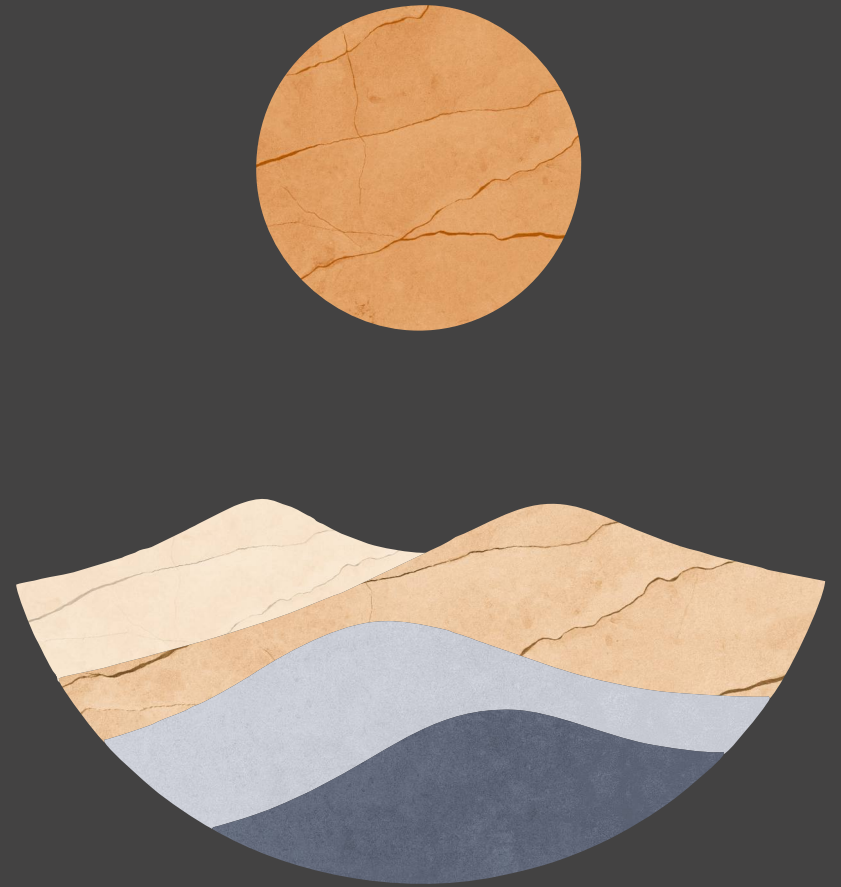
www.spentagonceramic.com

SCULPTED ART FOR YOUR HOME

Our artisan matt tiles are miniature masterpieces that add inspired warmth. Skilled hands transform clay into intricate floral, vine, and geometric designs. Subtle contours cast artistic shadows, drawing the eye. Group multiple tiles into a textured feature wall telling a unique story. These tiles visualize your artistic spirit. Mix and match patterns or highlight specific carvings. Their creative possibilities are limited only by your imagination. However used, these handmade tiles add charm and character.

100%
WATER PROOF

12+ SURFACE



www.spentagonceramic.com

BUILD your own **SUCCESS** STORY with **Spentagon**

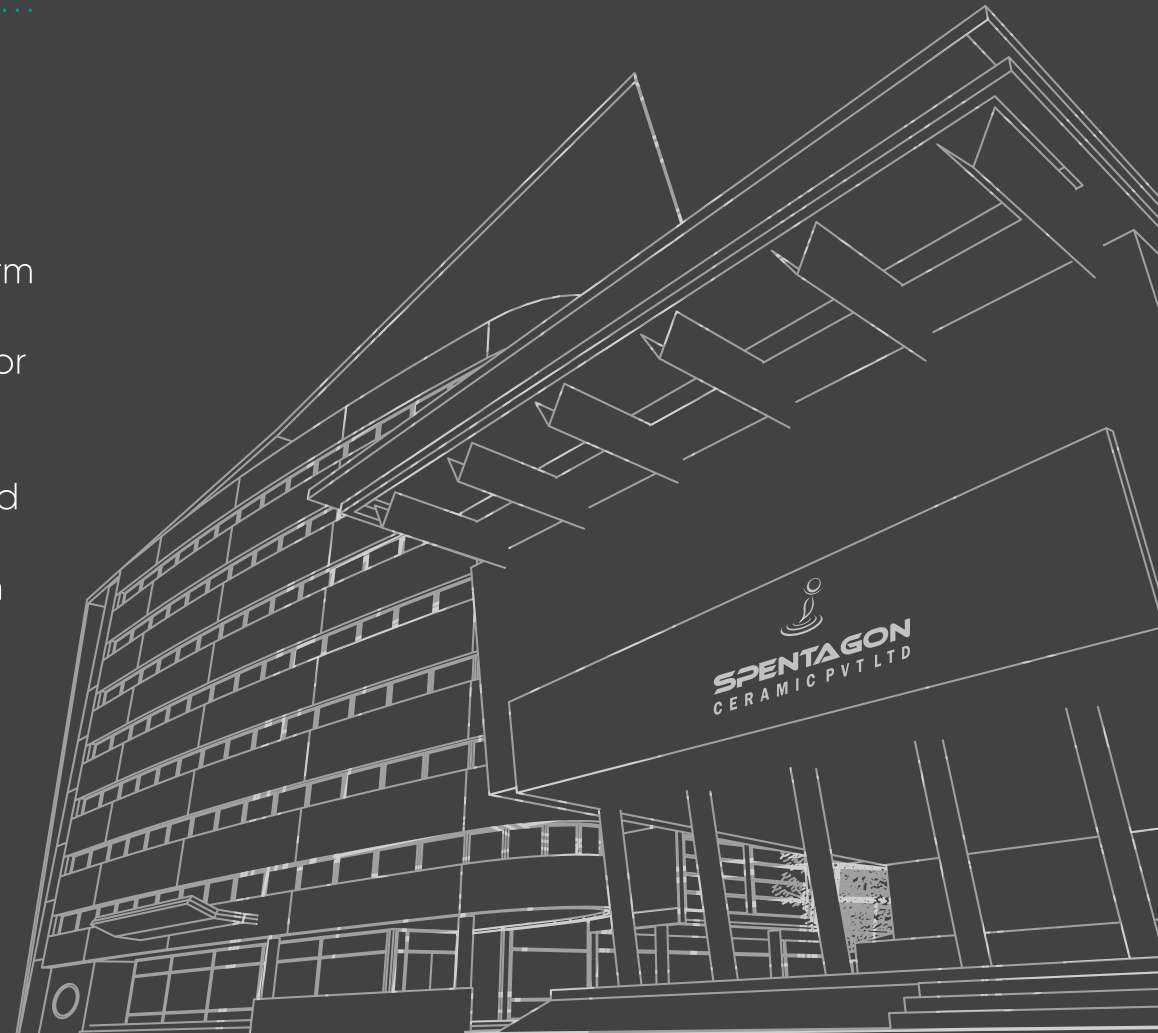
#10 Years
Of Excellence

**We are manufacturers and exporters of
porcelain tiles as well as slabs (interior and exterior)**

Everyone wants to walk into a home that is both warm and welcoming, without compromising on style and durability. Spentagon is collection of wood effect floor coverings, all beautifully replicated to give the appearance of natural textures to enhance your home's interior. Drawing inspiration from various wood species finishes, including rustic reclaimed planks to smooth contemporary tiles, Spentagon has a design to suit every room in your home.

12+ SURFACE

100%
WATER PROOF



Long Lifespan

if properly installed and maintained, porcelain tiles has the ability to last for decades of recommended use.

Aesthetically Pleasing

We have different colors, shapes, and styles of flooring to help match the aesthetic appeal of our customers.

Hygiene

The surface of ceramic and porcelain tiles does not easily retain antigens or allergens, not do they absorb fumes, odors or smoke.

Less Staining

porcelain tiles is less absorbent, therefore you won't experience any staining in the event of spilled drinks, food, or chemicals.



Fire Resistant

Our tiles are non-combustible and will not burn, melt, or give off toxic fumes when it is exposed to fire.



Water Proof

Our tiles are impervious to liquids. Their colours won't fade even if spills and puddles sit for a long while on your floors or surfaces.



Scratch Resistant

Our tiles are scratch-resistant which means that they will continue to look naturally amazing even after years of heavy traffic.



Impact Resistant

Our tiles have good strength and therefore, can withstand intense force or shock applied at the surface.



Stain Resistant

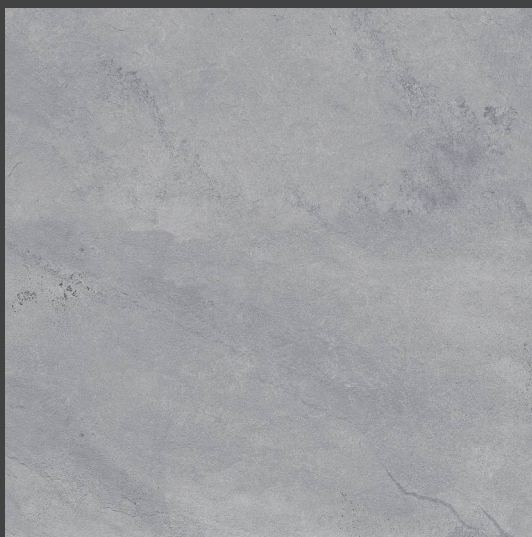
Because of its low porosity, vitrified tiles do not stain easily. Even coffee, wine, and the muddiest messes cannot deteriorate it.



Simpliclean

All tiles are easy to clean with a broom, vacuum, or wet mop. Our tiles are easier to clean and maintain.

Size: **600x600mm** | Finish: **MATT**



2015

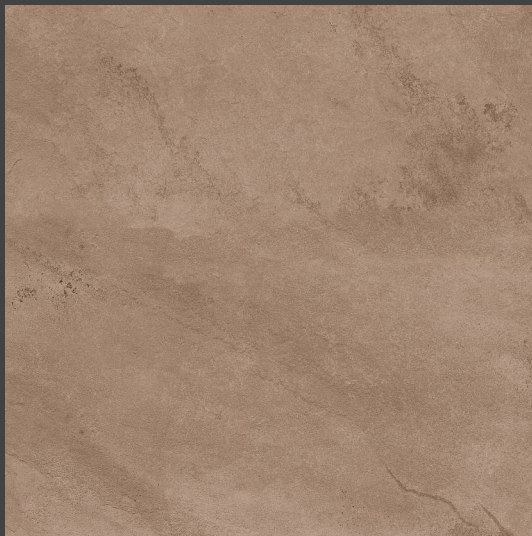


M-117



2016

Size: **600x600mm** | Finish: **MATT**



2017



M-115



2018

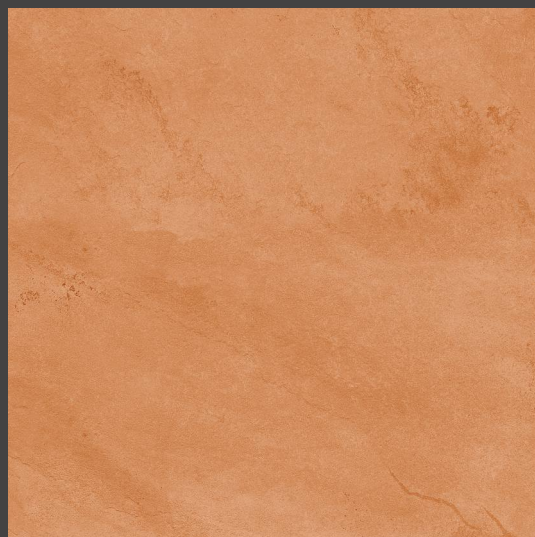
Design No: **2015-16-MK-117**

12+ SURFACE

100%
WATER PROOF



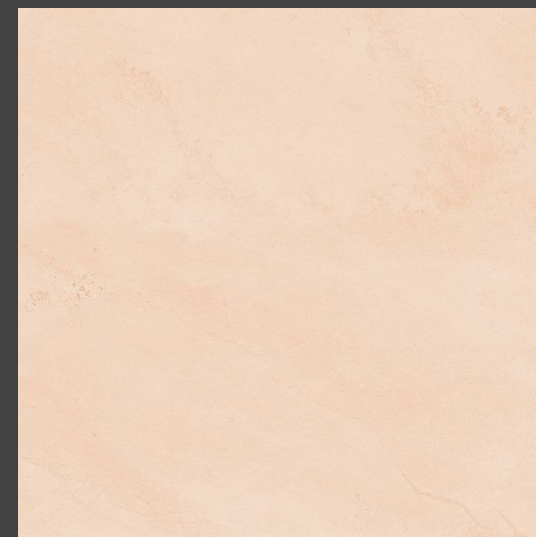
Size: **600x600mm** | Finish: **MATT**



2095



M-114

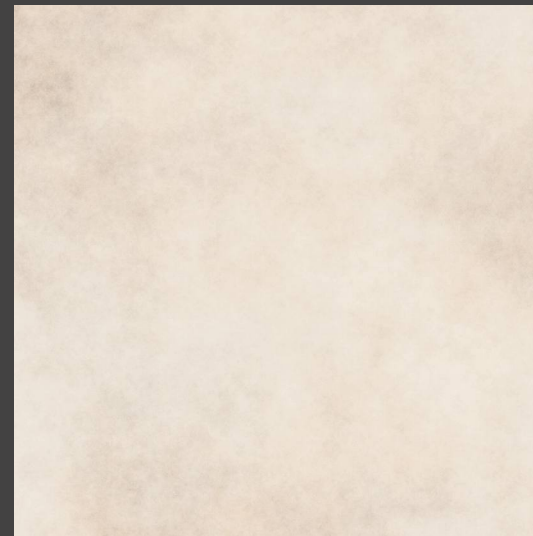


2096

Size: **600x600mm** | Finish: **MATT**



2137



2139

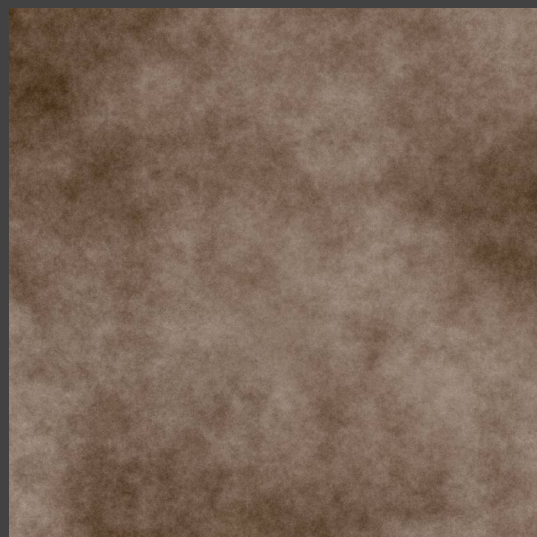
Design No: **2095-96-MK-114**

12+ SURFACE

100%
WATER PROOF



Size: **600x600mm** | Finish: **MATT**

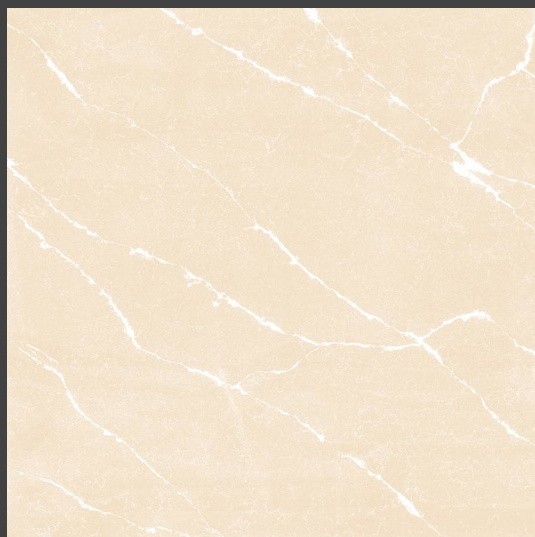


2140



2142

Size: **600x600mm** | Finish: **MATT**



2301



2302

Design No: **2301-02**

12+ SURFACE

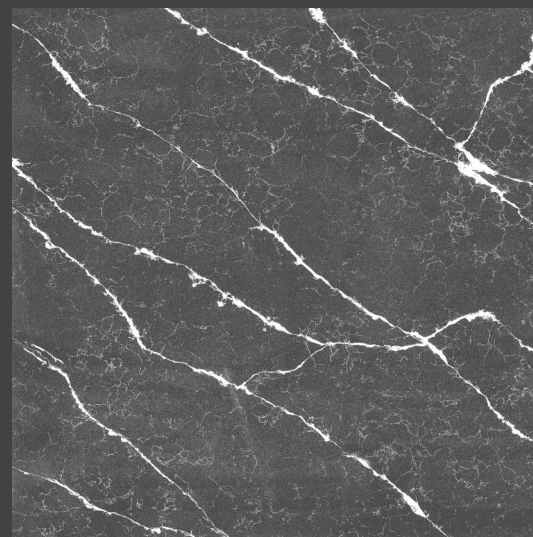
100%
WATER PROOF



Size: **600x600mm** | Finish: **MATT**



2303

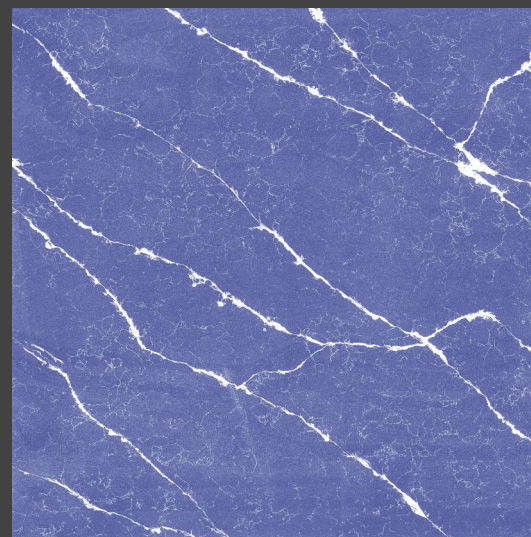


2304

Size: **600x600mm** | Finish: **MATT**



2305



2306

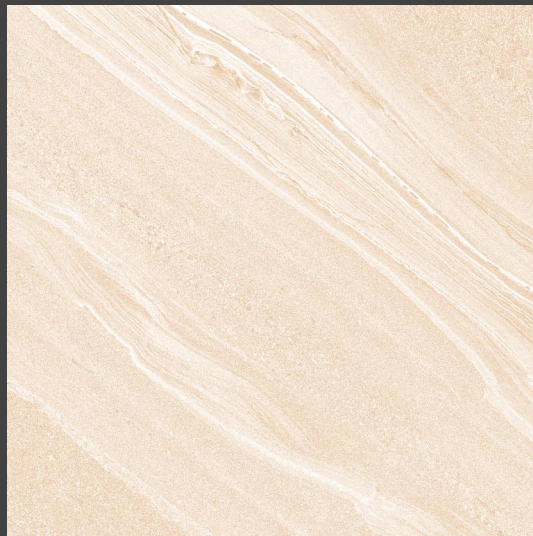
Design No: **2305-06**

12+ SURFACE

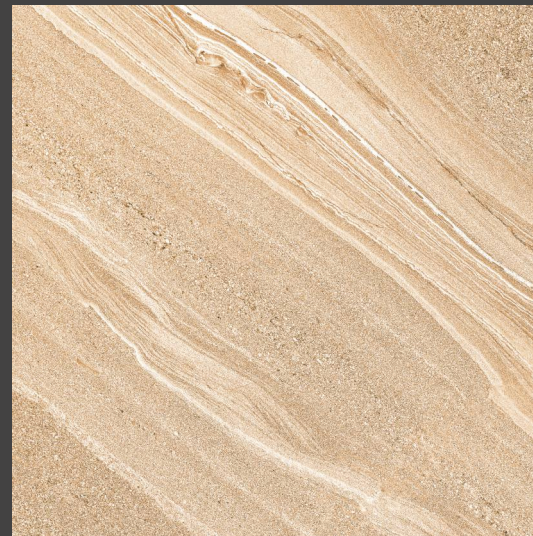
100%
WATER PROOF



Size: **600x600mm** | Finish: **MATT**

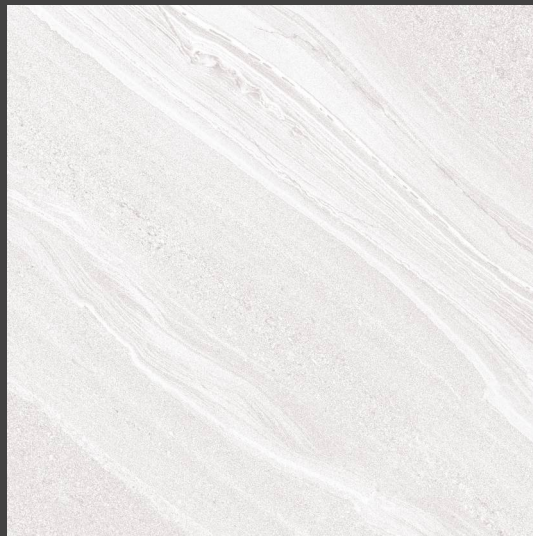


2307

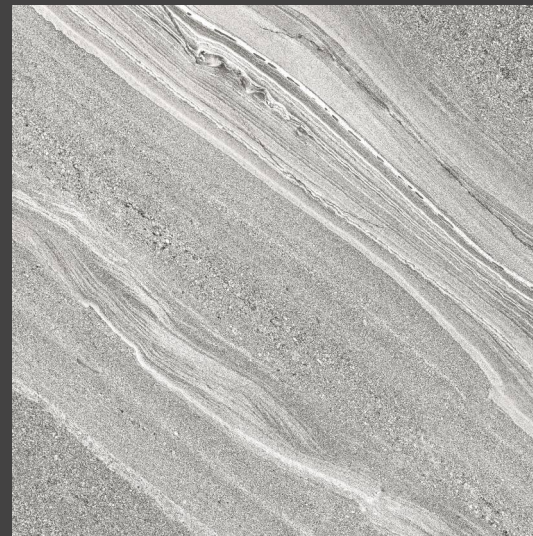


2308

Size: **600x600mm** | Finish: **MATT**



2309



2310

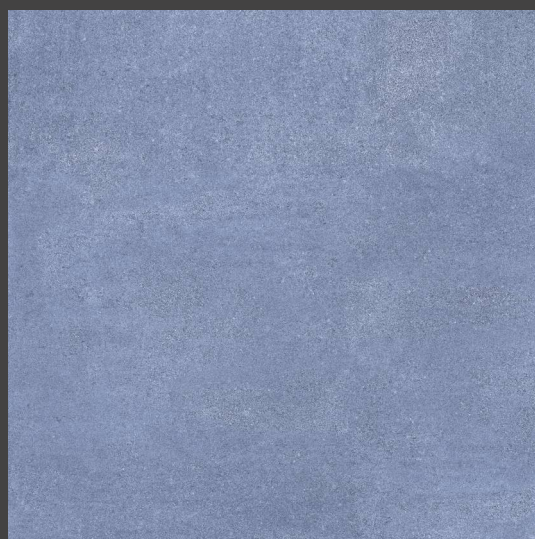
Design No: **2309-10**

12+ SURFACE

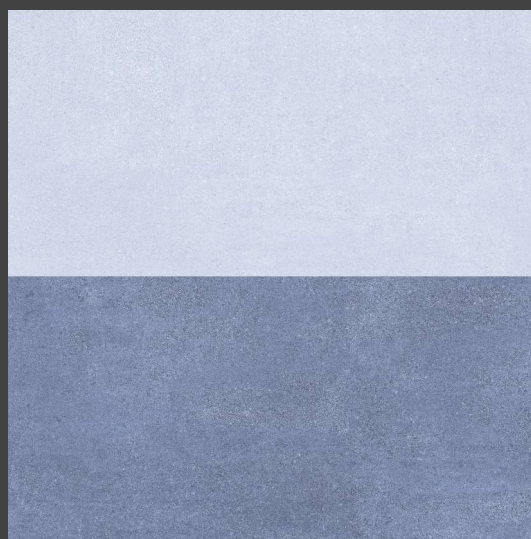
100%
WATER PROOF



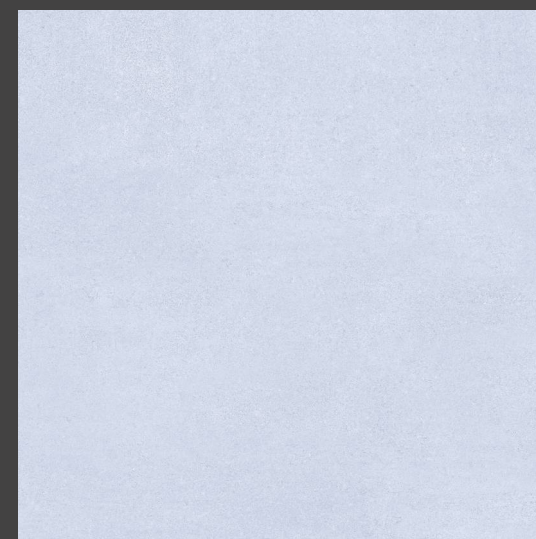
Size: **600x600mm** | Finish: **MATT**



2334



2335



2351

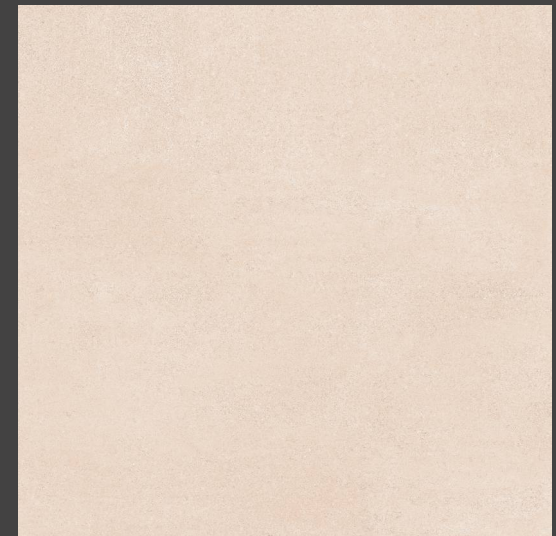
Size: **600x600mm** | Finish: **MATT**



2336



2337



2352

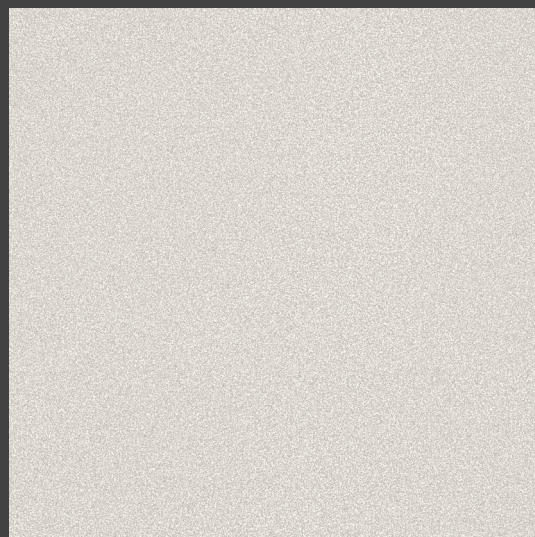
Design No: **2336-37-52**

12+ SURFACE

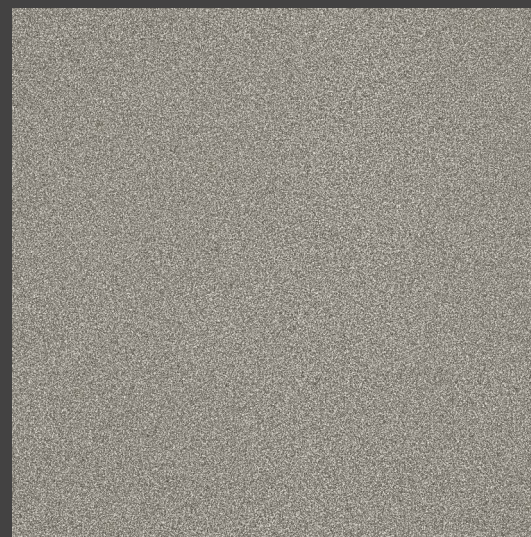
100%
WATER PROOF



Size: **600x600mm** | Finish: **MATT**

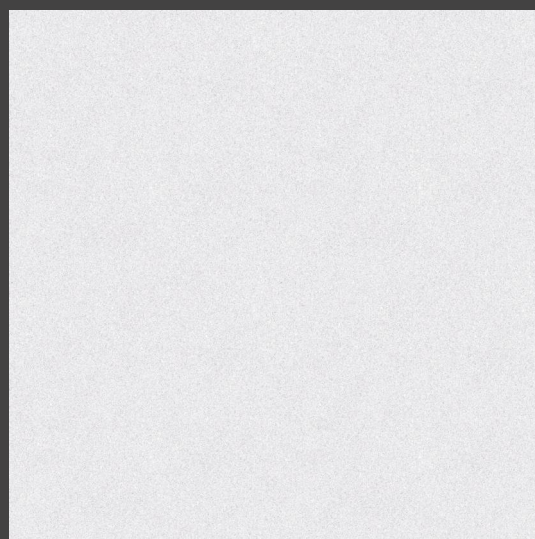


2344

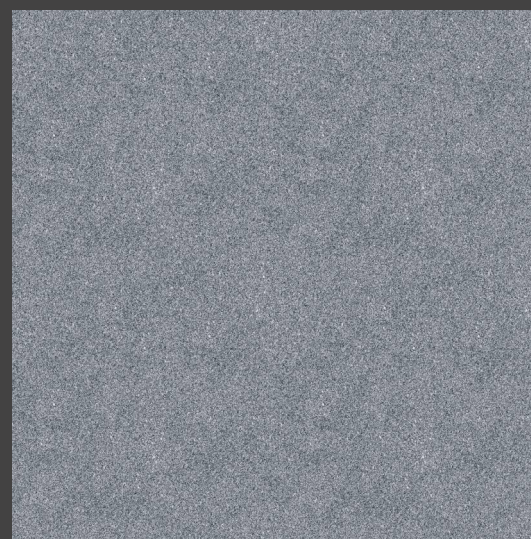


2345

Size: **600x600mm** | Finish: **MATT**



2346



2347

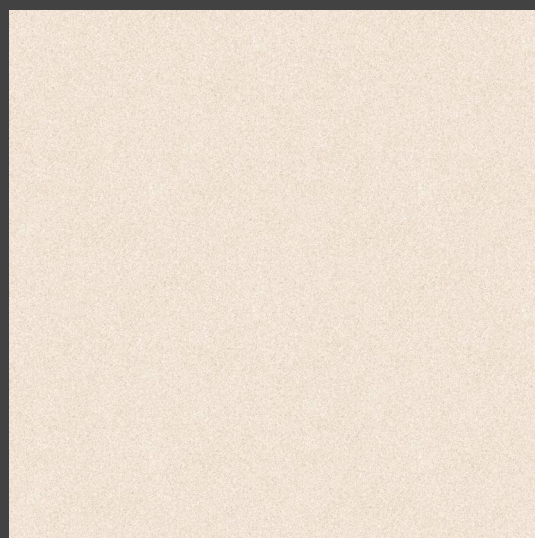
Design No: **2346-47**

12+SURFACE

100%
WATER PROOF



Size: **600x600mm** | Finish: **MATT**



2348

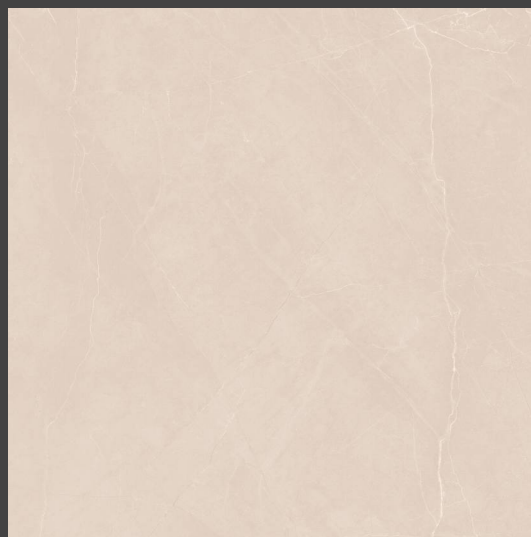


2349

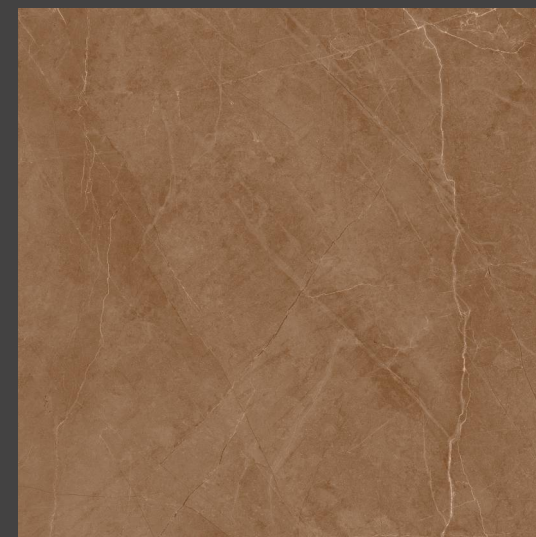
Size: **600x600mm** | Finish: **MATT**



2509



2510



2511

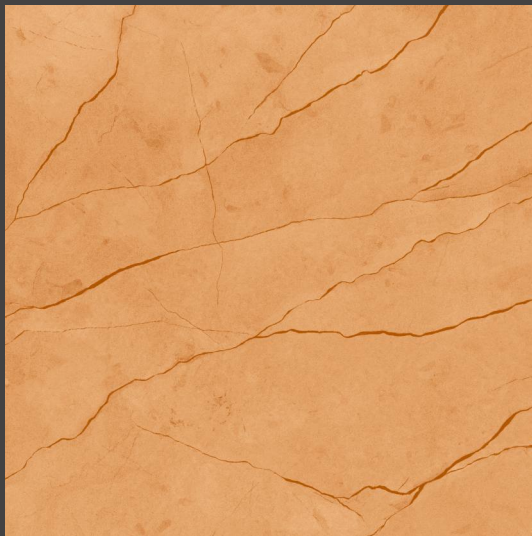
Design No: **2510-11**

12+SURFACE

100%
WATER PROOF



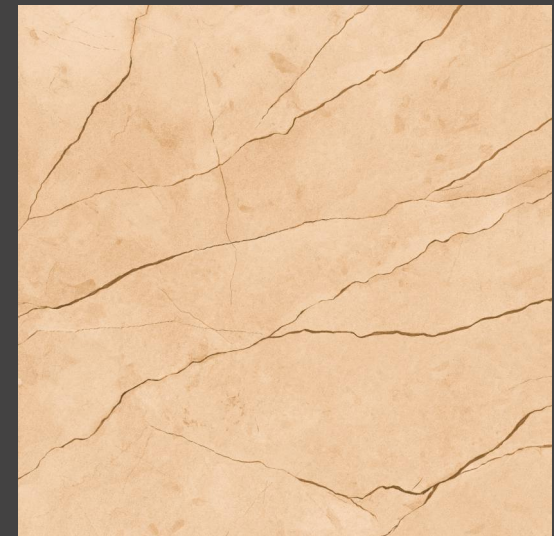
Size: **600x600mm** | Finish: **MATT**



2440



2441



2442

Size: **600x600mm** | Finish: **MATT**



2443



2444



2447

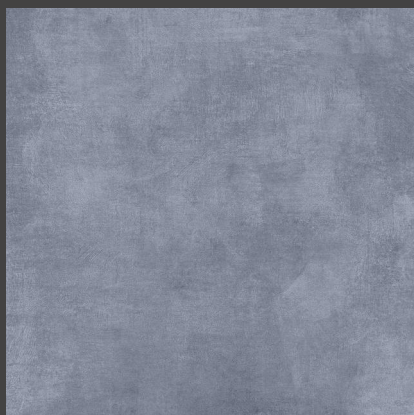
Design No: **2444-47**

12+ SURFACE

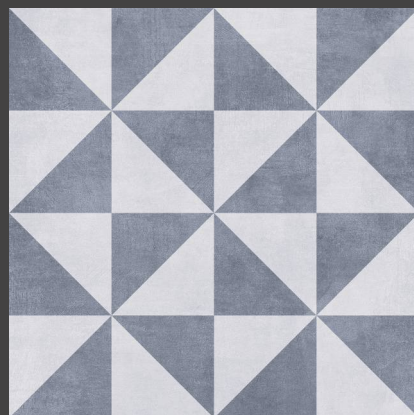
100%
WATER PROOF



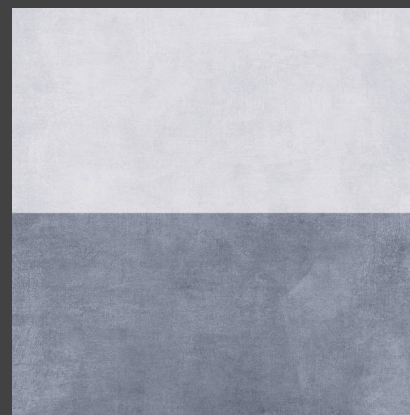
Size: **600x600mm** | Finish: **MATT**



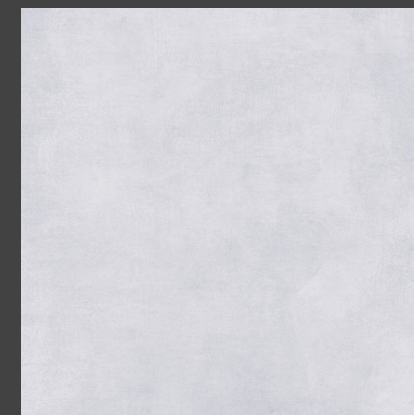
2481



2482

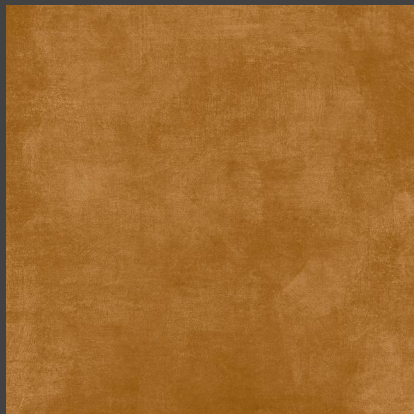


2483

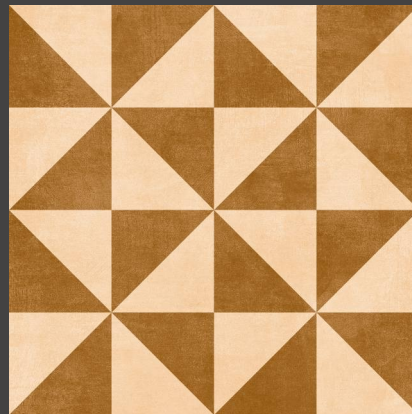


2484

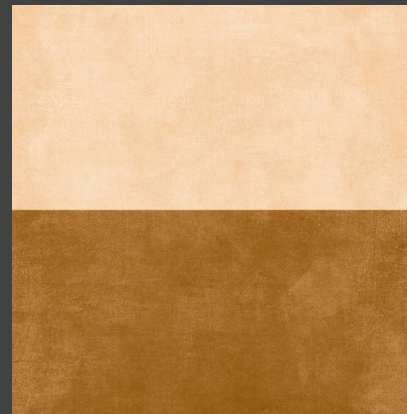
Size: **600x600mm** | Finish: **MATT**



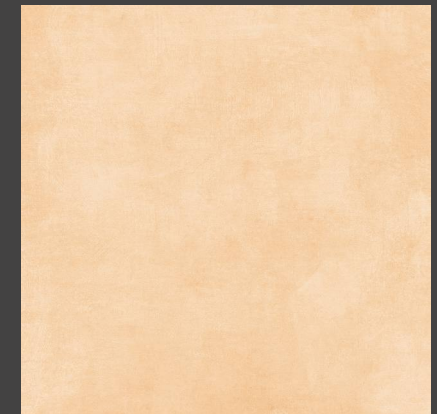
2485



2486



2487



2488

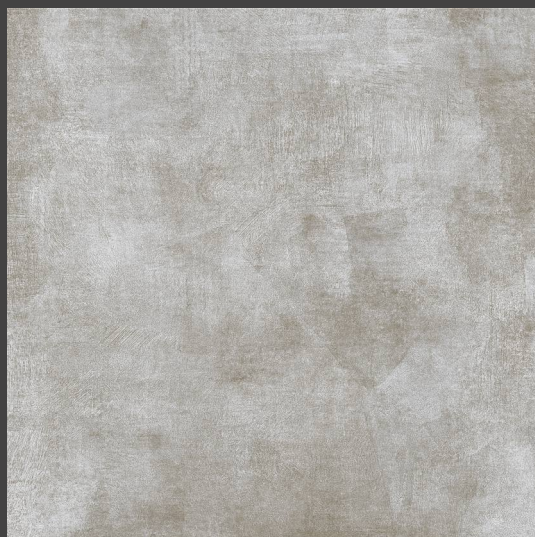
Design No: **2481-82-84**

12+SURFACE

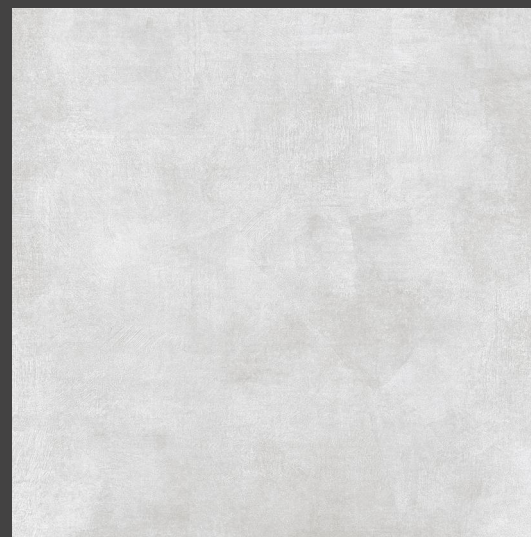
100%
WATER PROOF



Size: **600x600mm** | Finish: **MATT**

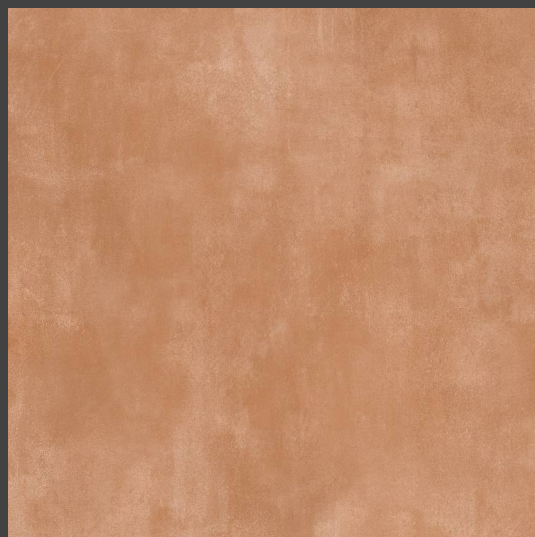


2491



2492

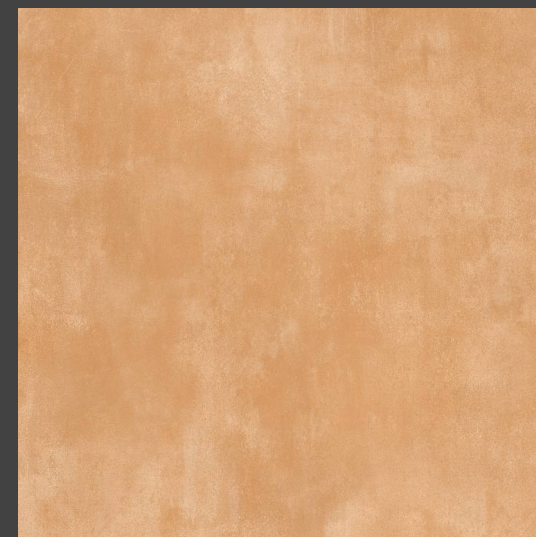
Size: **600x600mm** | Finish: **MATT**



2493



2494



2495

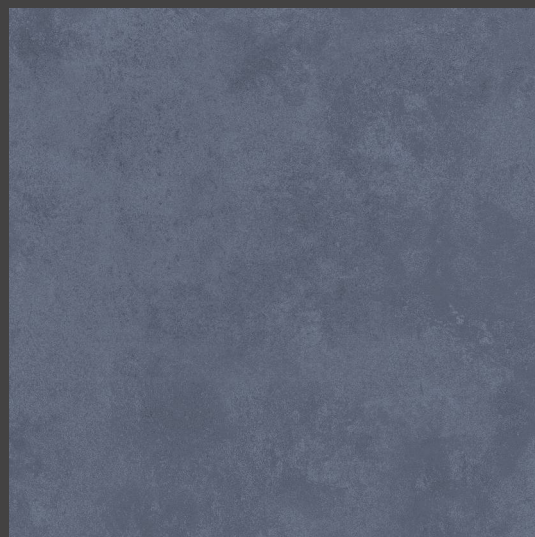
Design No: **2491-92**

12+ SURFACE

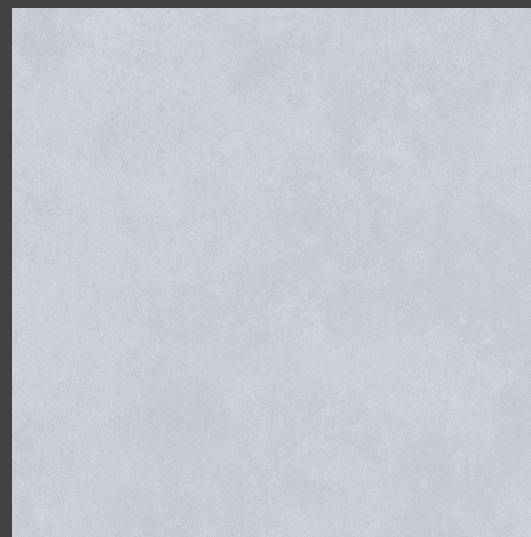
100%
WATER PROOF



Size: **600x600mm** | Finish: **MATT**



2496

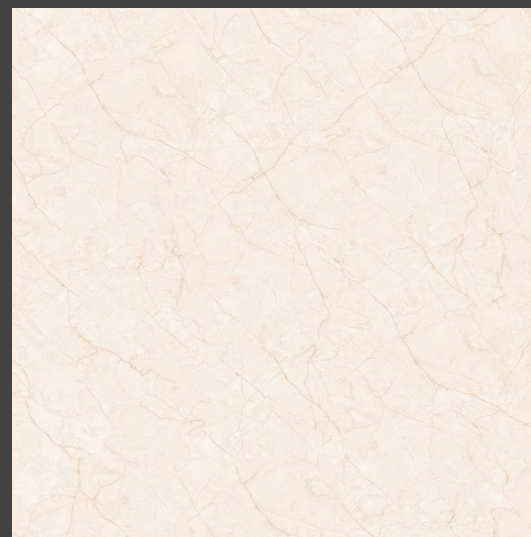


2497

Size: **600x600mm** | Finish: **MATT**



2499



2500

Design No: **2499-2500**

12+ SURFACE

100%
WATER PROOF



Size: **600x600mm** | Finish: **MATT**



2501



2502

Size: **600x600mm** | Finish: **MATT**



2507



2508

Design No: **2501-02**

12+ SURFACE

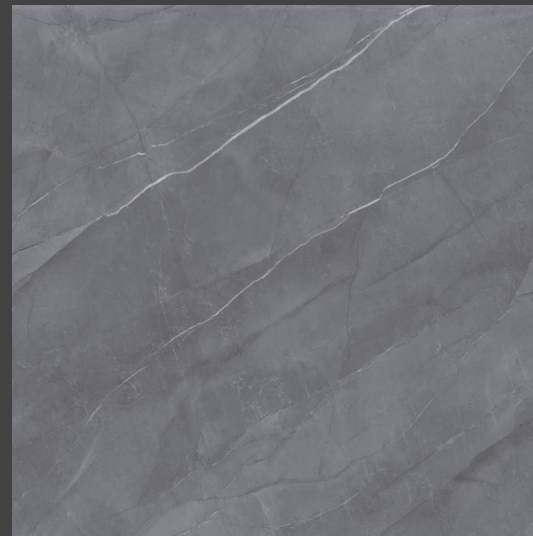
100%
WATER PROOF



Size: **600x600mm** | Finish: **MATT**



2477

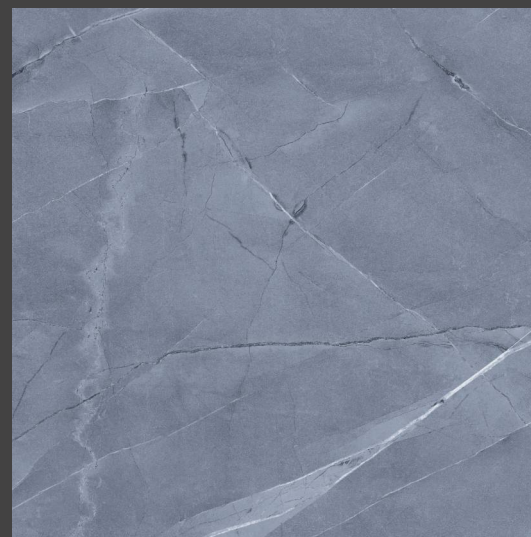


2524

Size: **600x600mm** | Finish: **MATT**



2527



2528

Design No: **2477-2524**

12+SURFACE

100%
WATER PROOF



Size: **600x600mm** | Finish: **MATT**



2539



2541



2540

Design No: **2539-40-41**

12+ SURFACE

100%
WATER PROOF





Delivering Your Dreams...

**Jetpar Road, Near Riga Ceramic,
Rangpar, Virat Nagar, Morbi - 363 64**

Call : +91 99786 18005 | +91 87587 77774

E-Mail : info@spentagonceramic.com

www.spentagonceramic.com